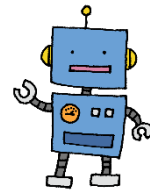


## Robots Make Dreams Come True



Step.5 Read the first part on p.60 and answer T/F questions below.

1. Every robot has same shapes, sizes, and roles in the modern world. ( T / F )
2. Scientists are continuing to invent more and more useful robots. ( T / F )

<Vocab check> Choose the best letter that matches to underlined words.

- ① I called my brother again and again, but I couldn't talk with him. ( )
- ② Barry is a famous rescue dog around the world. ( )
- ③ You should not go to dangerous places. ( )
- ④ Let's take a break when we reach the top of this mountain. ( )
- ⑤ Mars is one of the planets next to Earth. ( )

A: 到達する	B: 救助	C: 火星	D: 何度も	E: 危険な
---------	-------	-------	--------	--------

Step.6 Read introductions of four robots and answer questions below.

1. How does the first robot help you?
2. Where is the robot suit useful in?
3. Where was a rescue robot used in 2011?
4. Where does Robonaut 2 work?

<Vocab check> Choose the best letter that matches to underlined words.

- ① It is better to do physical activities to run faster. ( )
- ② People with disabilities on their eyes use a white stick. ( )
- ③ He learned about the movements of the planet yesterday. ( )
- ④ Mr. Tanaka always gives us good advice. ( )
- ⑤ We can connect with people around the world by learning various languages. ( )

A: 障害	B: 身体的な	C: ～と繋がる	D: 助言	E: 動き
-------	---------	----------	-------	-------

Step.7 Read sentences (p.62-63) and answer questions below.

1. Where does OriHime work at?
2. How does Mr. Nagahiro control OriHime?
3. What did the other OriHime user give Mr. Nagahiro?
4. What does people with disabilities wish?